

Line Power High Voltage Couplers

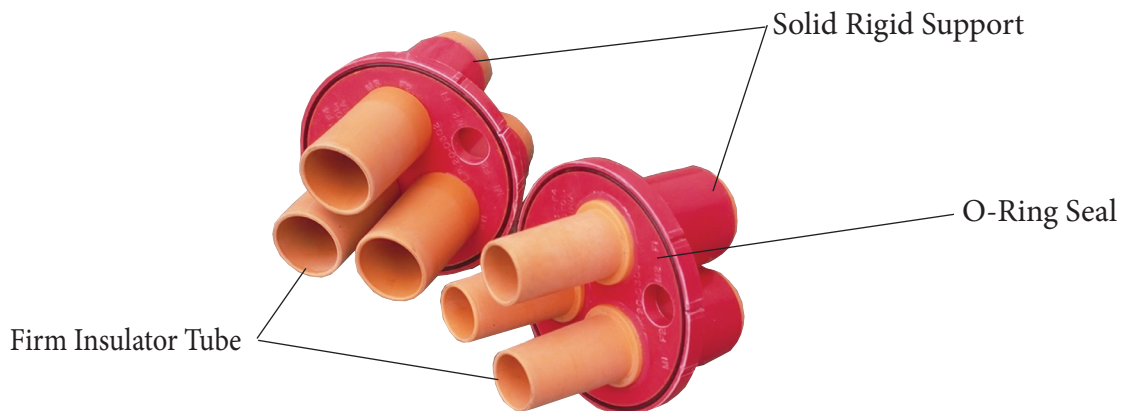
Product
Data
Sheet

LINE POWER ... the outstanding difference is the insulating system

- A solid, heavy, rigid insulator to prevent contact misalignment when cable is moved.
- A firm insulator tube of high track resistance EPDM rubber to prevent folding during coupling.
- Two positive O-Ring Seals between insulator and housing, one to prevent compound leakage, the other to prevent outside moisture from entering.
- LINE POWER high voltage couplers mate with other high voltage couplers.



Series 19 15kV Gear Mount Receptacle / Series 96 15kV Line Coupler



The Line Power Insulating System

Teflon Insulating System Also Available

Line Power High Voltage Couplers Feature:

- Plated electrical terminals
- Full strength starting threads
- Rigid insulator
- Couplers are interchangeable with other couplers

Optional Equipment for Line Power High Voltage Couplers:

- Quick thread (double acme)
- Interlocking dust covers
- Beryllium split male contacts
- Additional ground check contacts
- Kirklock drilling
- Teflon tubes
- No-thread couplers

Recommended High Voltage Couplers

PMG19AAO	Gear mounted plug (input)
SFG19AAO	Gear mounted socket w/standard dust cap (output)
SFG19ACO	Gear mounted socket w/standard interlocking dust cap (feed-thru)
SFG19AEO	Gear mounted socket w/insulated interlocking dust cap (feed-thru)
PML96AAO	Line mounted plug w/4" end bell
SFL96AAO	Line mounted socket w/4" end bell
PML97AAO	Line mounted plug w/5" end bell
SFL97AAO	Line mounted socket w/5" end bell

When Ordering Please Specify:

- Catalog number
- System voltage
- Size of phase conductors
- O.D. of jacket over cable
- Copper or aluminum wire
- Optional equipment

Line Power high voltage couplers, up to 15kV, 500 amperes, can solve your coupler problems.

Complete Catalog Available

Specifications Subject To Change Without Notice.

