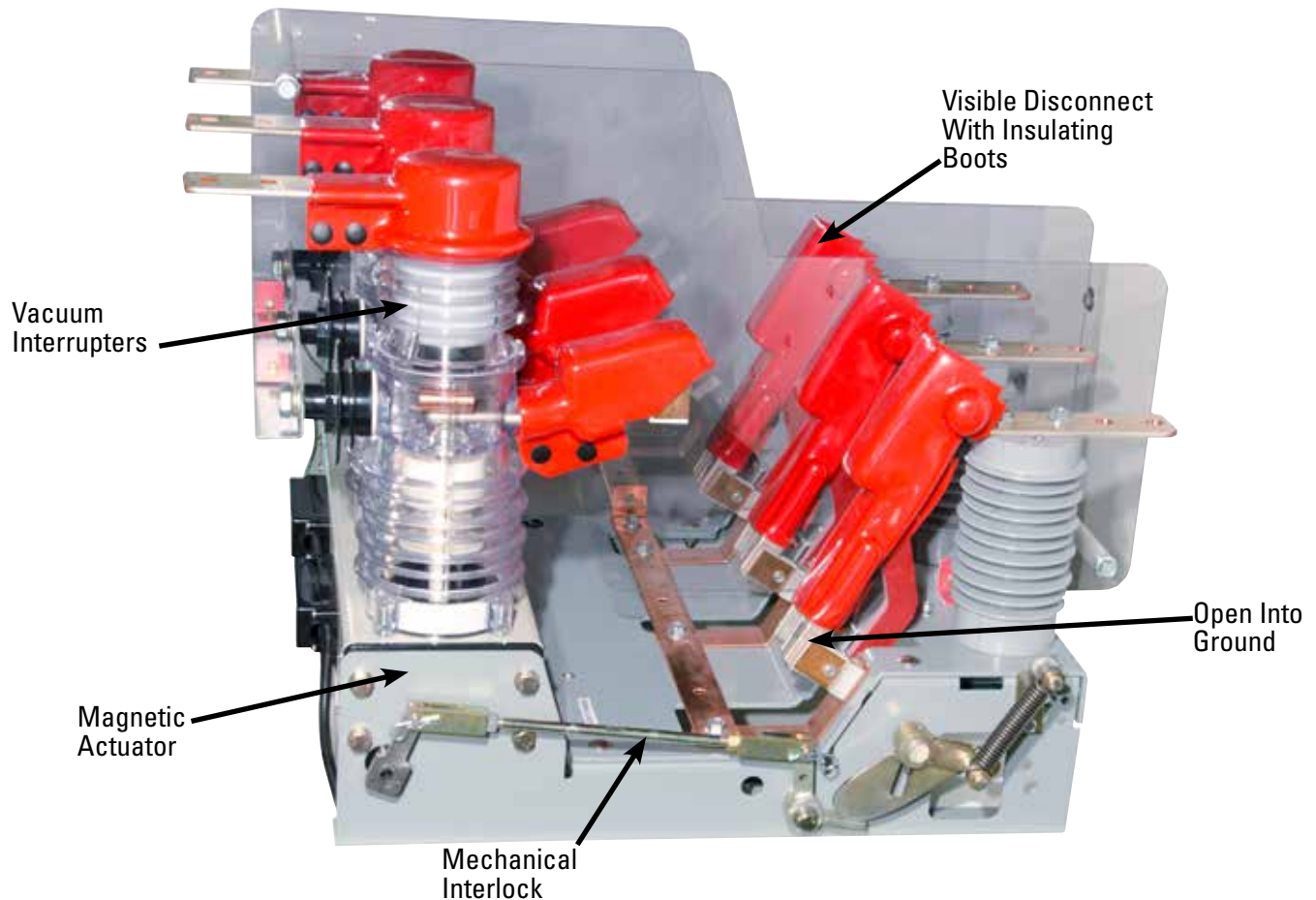


15 kV 600 Amp MAVRiC[®]

Mining Duty Vacuum Circuit Breaker Wide and Narrow

General
Information
Specifications



Application

Line Power Manufacturing's Vacuum Circuit Breaker, 3-phase, 15 kV vacuum interrupter device, is designed to provide protection for all types of electric feed circuits within its ratings.

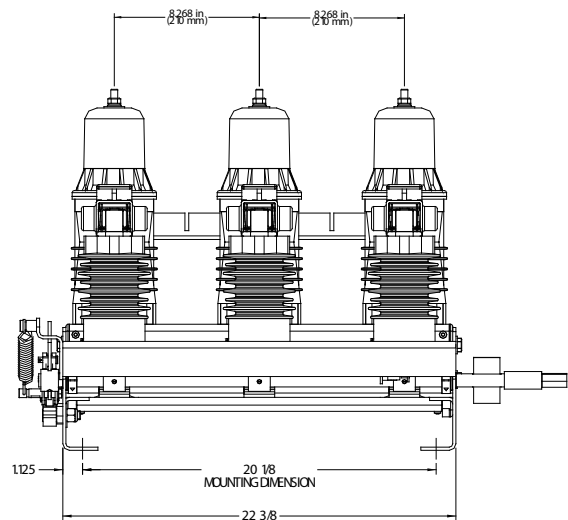
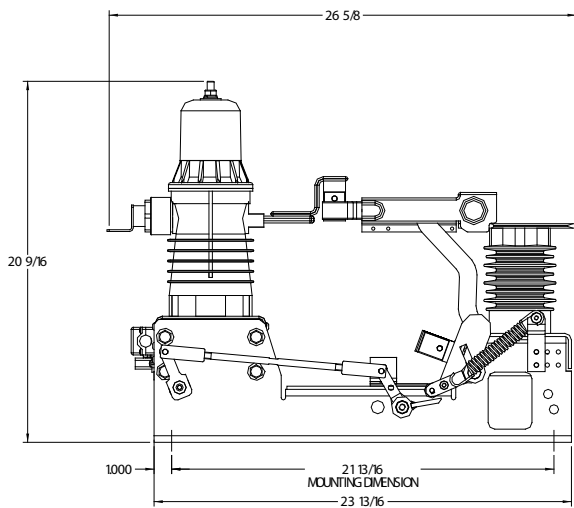
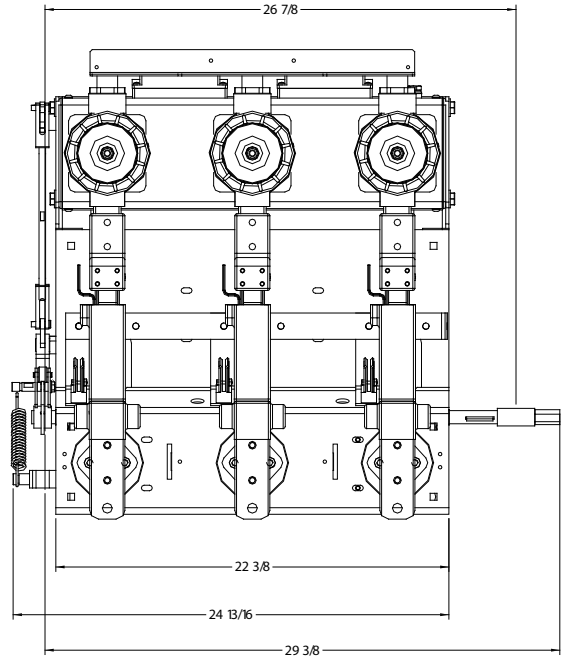
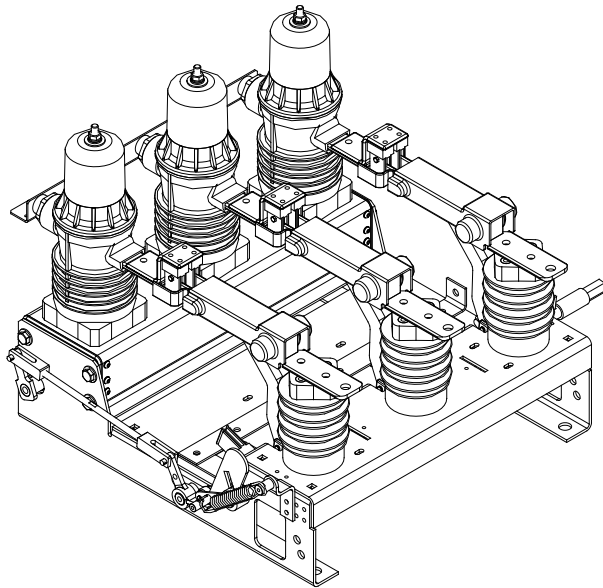
Ratings

Continuous Current	600 Amperes
Maximum Voltage	15 kV
Symmetrical Interrupting Capacity	20,000 Amperes Symmetrical
Lightning Impulse Withstand (BIL)	60 kV
Manual Operations	50,000 +

Features

- Reliable Magnetic Actuator
 - Rapid Operation, 3-Cycle
 - Maintenance Free Vacuum Assembly
 - Few Moving Parts
- Load Side Grounding of Visible Disconnect
- Universal Control Power
 - 120 to 170 VDC, 100-220 VAC
- Auxillary Contacts - Six 'a' and Six 'b' contacts
- Mechanically Interlocked Visible Disconnect
- Optional Accessories (Available in Power Centers)
 - Shunt Trip
 - Undervoltage Release
 - Key Interlocks
- Very Compact
 - Easy to Retrofit
 - Smaller Power Centers

15kV, 600 Amp MAVRiC® Mining Duty Vacuum Circuit Breaker Outline Drawing - Wide

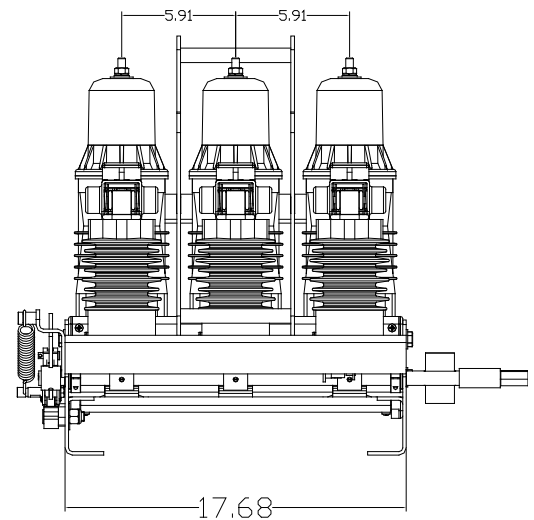
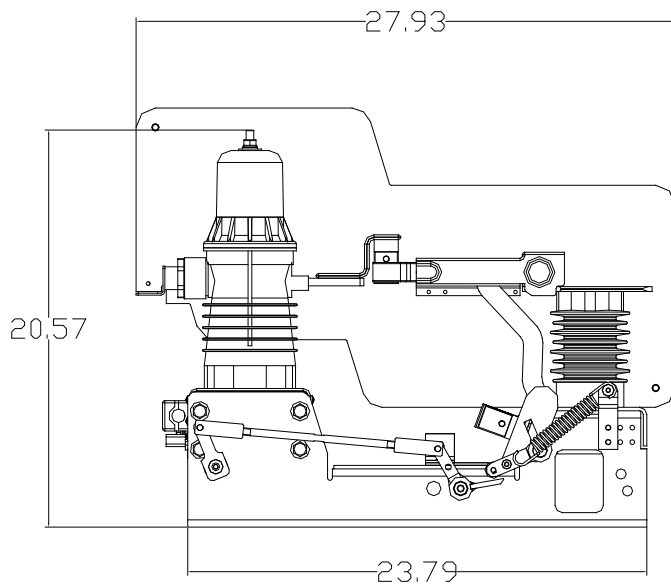
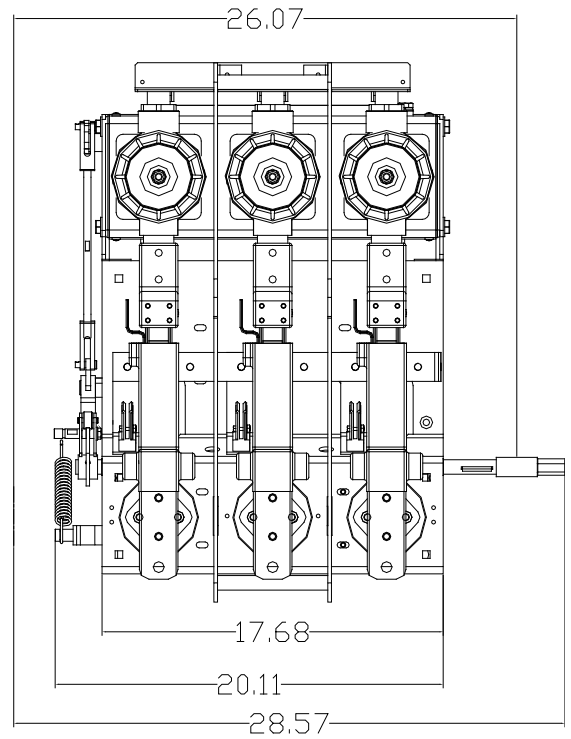
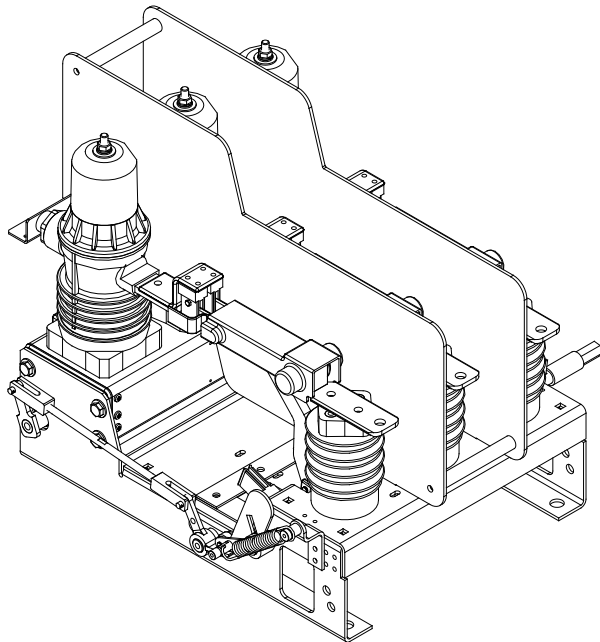


Part Number

20-2003-313 Right Hand (210mm Pole Spacing)
CM-15-1 Control Module*

* Each MAVRiC® Must Have a Control Module

15kV, 600 Amp MAVRiC® Mining Duty Vacuum Circuit Breaker Outline Drawing - Narrow



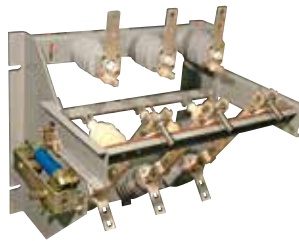
Part Number

20-2003-088 Right Hand (150mm Pole Spacing)
CM-15-1 Control Module*

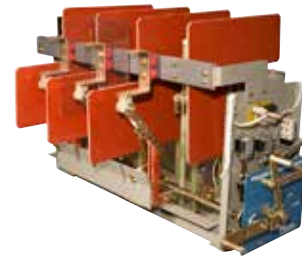
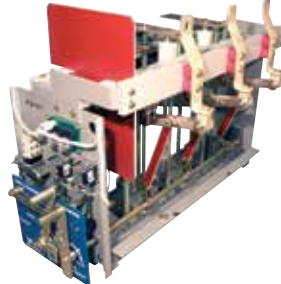
* Each MAVRiC® Must Have a Control Module

Genuine Line Power Component Parts

Switches



Vacuum Circuit Breakers



Low and High Voltage Couplers, Flange Terminators



Ground Monitors and Ground Fault Relays



High Voltage Splice Boxes



Mine-Duty Transformers

